

Terms & Conditions

Eligible Entrants

- ✓ Entry is open to all permanent residents of **Southern Africa**.
- ✓ Participation in the Olympiad is only open to **schools and teachers**; **individual student registrations will not be accepted**.
- ✓ The competition is open for **R-9 and equivalent students**.
- ✓ Employees and their immediate families of **Slate Science Operations Pty Ltd, Standard Bank**, and their associated agencies and companies are **not eligible to enter**.
- ✓ The class size must be a **minimum of 10 active students**.
- ✓ To qualify for **school-level prizes**, at least **80% of the school's total enrolment** (based on the **EMIS number**) must be **registered and active**.
- ✓ "**Active student**" means a student who has their own login, is enrolled within the school, and has completed at least one activity during the competition period.

How to enter

All existing **Matific users** with a current **paid or trialling licence** will be automatically registered for the competition.

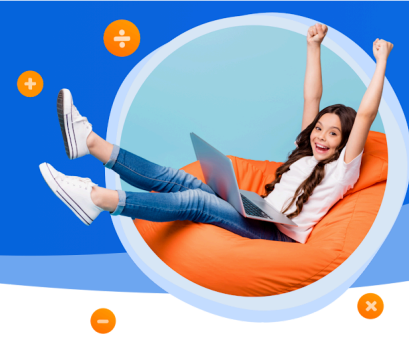
To be eligible, **new entrants** must register for the **Matific Olympiad** at:
<https://www.matific.com/za/en-za/home/matific-olympiad/>

All entries must include the entrant's **first name, last name, email address, phone number, school name, and country** to be eligible.

It is the entrant's responsibility to inform **Slate Science Operations Pty Ltd and Standard Bank** if their email address or phone number changes during the competition.

Time Zones

Unless otherwise stated, all timing references are based on GMT + 2 time zone



Registration Period

Registration starts 16 June 2025 and ends on 1 August 2025. .

Competition Period

Competition commences at GMT +2 00:01 on 4 August 2025 and concludes at 17:00 on 8 August 2025.

Prizes

There are 3 prize categories. Prizes are to be awarded to:

- Schools (1st, 2nd, 3rd)
- Teachers: Top 3
- Students (1st, 2nd, 3rd)

Formula Summary **(for prize eligibility and rankings)**:

School Target = EMIS enrolment \times 80% \times 250 stars

This ensures a fair comparison across all schools and encourages broader participation rather than selective entry.

The ranking is based on the achievements of a school's students out of the target goal. Every student has a goal of 250 stars to achieve. We look at the stars achieved for the active students divided by the goal of those students. The accuracy of participants is used in tie-breaking situations.

There's no rank for class or student for the competition. Instead, we have percentile and the percentile calculation logic is the same as the one used for schools.

All students will be rewarded a certificate and get entry into the draw based on the achievement of their target of 250 stars.

Stars collected:
100%: Ruby
90-99.99%: Platinum
70-89.99%: Gold
50-69.99%: Silver
<50%: Bronze

Prize values are listed on the [Standard Bank - Matific Maths Olympiad website](https://www.matific.com).



Prizes details

Slate Science Operations Pty Ltd and **Standard Bank** are not responsible for any changes in prize value between the publishing date and the date the prize is claimed.

All prize values are in ZAR.

All Prize winners are advised that tax implications may arise from their prize winnings, and they should seek independent financial advice prior to acceptance of their prize.

Neither **Slate Science Operations Pty Ltd** nor **Standard Bank** takes responsibility for changes in dates, times, cancellations, or other factors preventing prize collection.

Stars Earned

Students earn stars in The Standard Bank - Matific Maths Olympiad by completing activities. The more activities completed, the more stars on offer (capped at 250) for the students. Each competition activity can earn students 5 stars and may be attempted a maximum of 5 times per episode.

The school with the highest number of target achievements across the top 80% of registered participants will be the winners. The registered participants include students whose details have been provided by the teacher via the class list.

“Earning Stars” means:

- ✓ **Per student:** Stars are earned by completing activities in Adventure Island, Assigned Work, or the Arena. Each student can earn up to 250 stars.
- ✓ **Per school:** A school's score is calculated as the total stars collected by all participating students, compared to the target stars for the school.

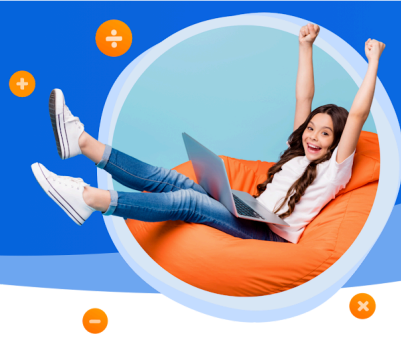
Notification of Winners

- ✓ The prize winner(s) who has provided all mandatory details will be selected by Matific after the completion of the Standard Bank - Matific Maths Olympiad.
- ✓ Winner(s) will be displayed on Matific's marketing collateral and will be notified by email.



Further Details

1. Subject to relevant state authority approval, Slate Science Operations Pty Ltd. and Standard Bank in its absolute discretion, at any time before the awarding of the prizes to cancel the competition or to vary or cancel the award of the prizes including, without limitation, circumstances where in the promoter's opinion (which it shall form in its absolute discretion):
 - a. Prize winners do not satisfy the competition entry requirements; or
 - b. Slate Science Operations Pty Ltd. cannot conduct the competition or award the prizes for any reason beyond its control.
2. No responsibility will be accepted by Slate Science Operations Pty Ltd. and Standard Bank for late, lost or misdirected entries and all entries are deemed to be received at the time of receipt of the entry into the Slate Science Operations Pty Ltd. and Standard Bank and NOT time of transmission by the entrant. Slate Science Operations Pty Ltd. and Standard Bank accept no responsibility for outdated or incorrect contact details or contact details by which the entrant cannot be contacted during business hours on the relevant dates.
3. Slate Science Operations Pty Ltd. and Standard Bank reserves the right to cancel the award of prize/s to, and/or to disqualify any individual who, as determined in the sole discretion of Slate Science Operations Pty Ltd. and Standard Bank has breached these terms and conditions or who has otherwise engaged in unlawful or improper conduct that is designed to jeopardise the fair conduct of the competition.
4. A decision of Slate Science Operations Pty Ltd. and Standard Bank in relation to the conduct of the competition is binding and conclusive, and no correspondence will be entered into.
5. Entrants enter the competition at their sole risk. With the exception of liability which cannot be excluded by law, Slate Science Operations Pty Ltd. and Standard Bank shall not be liable for any loss or damage which is suffered (including but not limited to indirect or consequential loss) or for personal injury suffered or sustained as a result of taking the prizes or entering the competition.
6. All entries become the property of Slate Science Operations Pty Ltd. and Standard Bank may be communicated to the public by Slate Science Operations Pty Ltd. and Standard Bank or used for promotional purposes, subject to the privacy policy of Slate Science Operations Pty Ltd. which is available at www.matific.com. By entering the competition, the prize winners and participants agree to the use of their name, image, audio-visual recording and photographs, without compensation, and agree that Slate Science Operations Pty Ltd. will own the copyright in any such images, audio-visual recordings and photographs.



7. By entering the Competition, participants consent to receiving email communications regarding the competition, their Matific account, and other relevant information from Slate Science Operations Pty Ltd. and Standard Bank to the e-mail address submitted in their entry. Entrants can unsubscribe at any time.
8. If required by the Minister for Trade, Industry and Competition, the National Consumer Commission or for any other reason, we can end the Competition immediately with or without notice to you. If this happens, you waive (give up) any rights which you may have against us and you will have no claim against us.
9. Nothing in these Terms prevents you from approaching the National Consumer Commission or any other relevant authority to obtain relief.
10. The promoter is Slate Science Operations Pty Ltd (ABN 36 616 332 551) of Level 3, 447 Kent Street, Sydney, NSW, 2000, Australia.

If you require any further entry details, please email us at southafrica@matific.com