

Terms & Conditions

Eligible Entrants

- ✓ Entry is open to all permanent residents of Australia and permanent residents of New Zealand.
- ✓ Competition is open for Year F-9 Australian students and Year 1-10 New Zealand Students.
- ✓ Employees and their immediate families of Slate Science Operations Pty Ltd, and its associated agencies and companies are not eligible to enter.
- ✓ The class size must be a minimum of 10 active students.
- ✓ The school size must be a minimum of 50 active students.
- ✓ "Active student" means students that have their own login and enrolment within the school.

How to enter

All existing Matific users with a current paid or trialling licence will automatically register for the competition.

To be eligible, new entrants must register for Matific Olympiad at

Australia: <https://www.matific.com/au/en-au/home/olympiad/>

New Zealand: <https://www.matific.com/nz/en-nz/home/olympiad/>

All entries must include the entrant's first name, last name, email address, phone number, school name and country to be eligible for entry. It is the entrant's responsibility to inform Slate Science if their email address or phone number changes during the competition period.

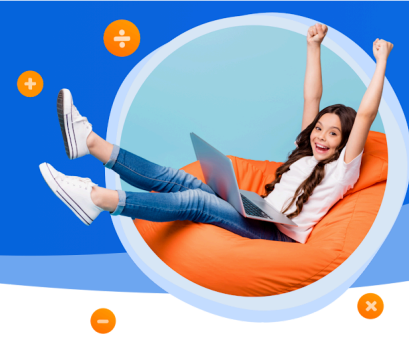
A minimum of 80% of the school role has to be active in the Olympiad for the school to be eligible to win the school cash prizes.

Time Zones

Unless otherwise stated, all timing references are based on Sydney time.

Registration Period

Registration starts on 15 June 2026 and ends on 9 August 2026



Competition Period

Competition commences at AEST 00:01 on 10 August 2026 and concludes at AEST 23:59 on 14 August 2026.

Important notice for participants in offline mode

If you play Matific in offline mode, please ensure to connect your device to the internet and log in to your account **before** the Competition ends. This is to make sure that your scores accumulated in the offline mode will be counted towards the Competition. Any scores submitted after the competition ends will not be counted towards determining the winners.

Prizes

There are 3 prize categories. Prizes are to be awarded to:

- Schools (1st, 2nd, 3rd)
- Students (1st, 2nd, 3rd)
- Teachers (1st, 2nd, 3rd)

The ranking is based on the achievements of a school's students out of the target goal. Every student has a goal of 150 stars to achieve. We look at the stars achieved for the active students divided by the goal of those students (or 50% of students, whichever is higher). The accuracy of participants is used in tie-breaking situations.

There's no rank for class or student for the competition. Instead, we have percentile and the percentile calculation logic is the same as the one used for schools.

All students will be rewarded a certificate and get entry into the draw based on the achievement of their target of 150 stars.

Stars collected

100%: Ruby - 25 entries

80-99.99%: Platinum - 15 entries

50-79.99%: Gold - 5 entries

20-49.99%: Silver - 2 entries

< 20%: Bronze - 1 entry

Prize values are listed on the Matific Maths Olympiad - AU/NZ website.



Prizes details

Slate Science Operations Pty Ltd. is neither responsible nor liable for any change in the value of the prizes occurring between the publishing date and the date the prize is claimed.

All prize values are in AUD.

All Prize winners are advised that tax implications may arise from their prize winnings, and they should seek independent financial advice prior to acceptance of their prize.

No responsibility will be taken by the Slate Science Operations Pty Ltd. for any changes in dates, times or cancellations or other arrangements that may prevent the prize winners from winning the prize

Stars Earned

Students earn stars in The Matific Maths Olympiad by completing activities. The more activities completed, the more stars on offer for the students. Each competition activity can earn students 5 stars and may be attempted a maximum of 5 times per episode.

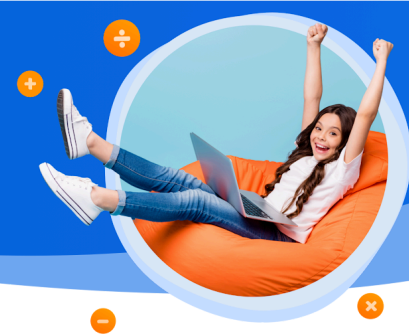
The school with the highest number of target achievements across the top 50% of registered participants will be the winners. The registered participants include students whose details have been provided by the teacher via the class list.

“Earning Stars” means:

- ✓ Per student: Points/stars are earned by completing activities on the Adventure Island, Assigned Work, or Arena. Maximum stars achieved is 150.
- ✓ Per school: A school's score is calculated as the average score collected by the top 50% of the students in the competing school.

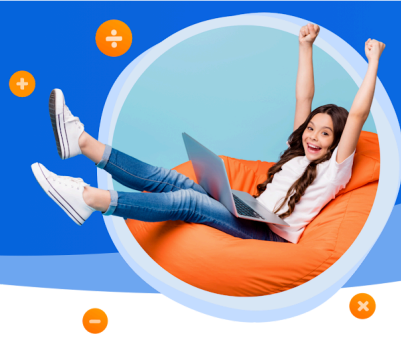
Notification of Winners

- ✓ The prize winner(s) who has provided all mandatory details will be selected by Matific after the completion of the Matific Olympiad.
- ✓ Winner(s) will be displayed on Matific's marketing collateral and will be notified by email.



Further Details

1. Subject to relevant state authority approval, Slate Science Operations Pty Ltd. in its absolute discretion, at any time before the awarding of the prizes to cancel the competition or to vary or cancel the award of the prizes including, without limitation, circumstances where in the promoter's opinion (which it shall form in its absolute discretion):
 - a. Prize winners do not satisfy the competition entry requirements; or
 - b. Slate Science Operations Pty Ltd. cannot conduct the competition or award the prizes for any reason beyond its control
2. No responsibility will be accepted by Slate Science Operations Pty Ltd. for late, lost or misdirected entries and all entries are deemed to be received at the time of receipt of the entry into the Slate Science Operations Pty Ltd. and NOT time of transmission by the entrant. Slate Science Operations Pty Ltd. accepts no responsibility for outdated or incorrect contact details or contact details by which the entrant cannot be contacted during business hours on the relevant dates.
3. Slate Science Operations Pty Ltd. reserves the right to cancel the award of prize/s to, and/or to disqualify any individual who, as determined in the sole discretion of Slate Science Operations Pty Ltd. has breached these terms and conditions or who has otherwise engaged in unlawful or improper conduct that is designed to jeopardise the fair conduct of the competition.
4. A decision of Slate Science Operations Pty Ltd. in relation to the conduct of the competition is binding and conclusive, and no correspondence will be entered into.
5. Entrants enter the competition at their sole risk. With the exception of liability which cannot be excluded by law, Slate Science Operations Pty Ltd. shall not be liable for any loss or damage which is suffered (including but not limited to indirect or consequential loss) or for personal injury suffered or sustained as a result of taking the prizes or entering the competition.
6. All entries become the property of Slate Science Operations Pty Ltd. and may be communicated to the public by Slate Science Operations Pty Ltd. or used for promotional purposes, subject to the privacy policy of Slate Science Operations Pty Ltd. which is available at www.matific.com. By entering the competition, the prize winners and participants agree to the use of their name, image, audio-visual recording and photographs, without compensation, and agree that Slate Science Operations Pty Ltd. will own the copyright in any such images, audio-visual recordings and photographs.



7. By entering the Competition, participants consent to receiving email communications regarding the competition, their Matific account, and other relevant information from Slate Science Operations Pty Ltd. to the e-mail address submitted in their entry. Entrants can unsubscribe at any time.
8. The promoter is Slate Science Operations Pty Ltd (ABN 36 616 332 551) of Level 3, 447 Kent Street, Sydney, NSW, 2000, Australia.

If you require any further entry details, please email us at competitions@matific.com